

**TO: HEALTH OVERVIEW AND SCRUTINY PANEL  
26 APRIL 2012**

---

**PUBLIC HEALTH UPDATE  
Director of Adult Social Care, Health and Housing and  
Director of Public Health, NHS Berkshire East**

**1. PURPOSE OF REPORT**

- 1.1 The purpose of this report is to further update the Health Overview and Scrutiny Panel on the emerging arrangements for the transfer of Public Health functions to Local Authorities in April 2013.

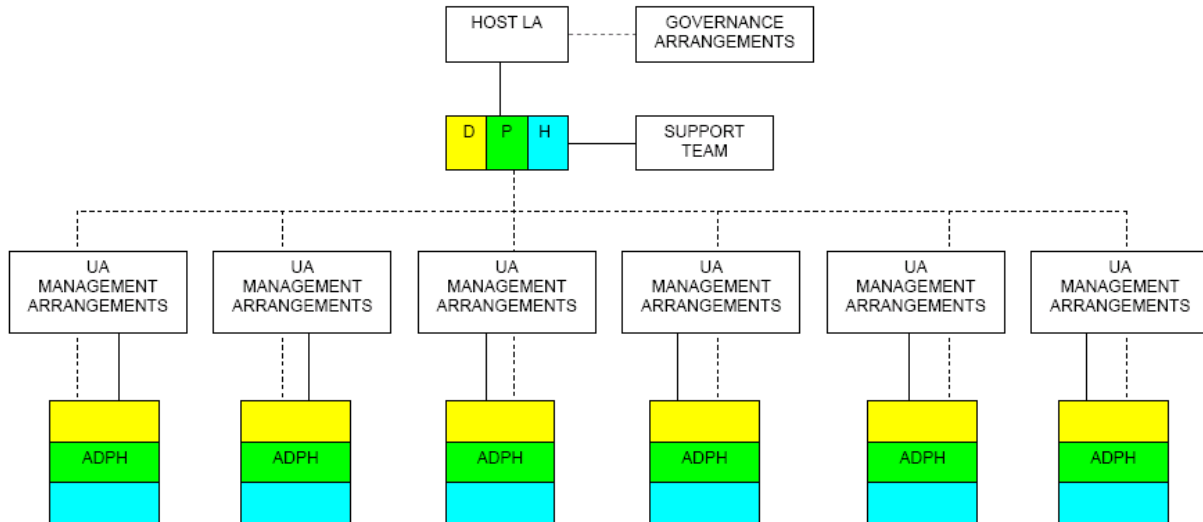
**2. RECOMMENDATION**

- 2.1 The Health Overview and Scrutiny Panel are asked to note this update report.**

**3. SUPPORTING INFORMATION**

- 3.1 Members will be aware from the last meeting that by 5 April a Transition Plan should be formally submitted to the Strategic Health Authority (SHA). At the beginning of March, Local Authority Chief Executives were written to by the SHA advising the deadline was 16 March 2012.
- 3.2 The six Berkshire Unitary Authorities are working together with the PCT Cluster to determine an effective Public Health solution for Berkshire.
- 3.3 There is no doubt that the organisational challenge within Berkshire is greater than in many authorities who have co-terminus PCT and Local Authorities. This has been reflected in the fact that there is a formal Transition Board. This is chaired by Timothy Wheadon, Bracknell Forest Chief Executive.
- 3.4 At their meeting in February, the Berkshire Chief Executives supported the view that there should be one Director of Public Health for Berkshire, with local leadership in the form of an 'Assistant Director of Public Health' in each Local Authority to provide local leadership. In Bracknell Forest, the function is to be within Adult Social Care, Health and Housing as determined by the Executive in February 2012.
- 3.5 The diagram on the next page sets this out. The workstream regarding organisation structure and governance is working on the detail of what activities will be undertaken in each section.

## Unrestricted



The shading reflects the 3 elements of the role:-

- Strategic Public Health activity
- Local Authority role
- Public Health advice to the NHS

- 3.6 Once the structure is complete then there is a requirement to follow the Department of Health's organisational change protocol.
- 3.7 The final package of measures will need to be formally approved by each Council, through their own procedures.
- 3.8 The Transition Plan submitted to the SHA as Annexe A to this report. It has set the foundation of activity for the Transition Board. It is anticipated that the work of that Board will be regularly reported to this Overview and Scrutiny Panel. Given the timing of meetings, the Director of Adult Social Care, Health and Housing will verbally update from the latest meeting as it will take place after the deadline for Panel papers.
- 3.9 Since the last Panel meeting, the Government has announced funding arrangements following an exercise undertaken by the PCT, submitted to the Department of Health. The allocation is intended to be based on current spend, however, the initial allocation is less than the current spend. Representations are being made to the Department of Health.
- 3.10 One of the workstreams is looking in detail at all of the financial and contractual implications.
- 3.11 Berkshire East Local Authorities will receive one of the lowest allocations for Public Health at £21 per head, whilst Berkshire West Authorities will receive £25 per head.
- 3.12 There is wide national variation in Public Health spend and the Department of Health and various ministers have indicated that the current spend will be given to the Local Authorities and that there will also be a 'pace of change' element. This is the target budget that authorities should receive over time. This is the mechanism used in the NHS to change allocations. It operates in a similar way to 'floors' and 'ceilings' in Local Authority finance terms.

- 3.13 As reported at the last meeting, the Director of Public Health (NHS Berkshire East) in conjunction with Local Authorities and the LGA established an education event for Elected Members of Scrutiny Panels. Given the wide ranging aspects of Public Health, the invite was made to all members of this Panel, the Chairman and Vice Chairman of all other Panels. As well as the Director of Adult Social Care, Health and Housing, Portfolio Holder and Head of Scrutiny, this was attended by Cllr Virgo and Cllr Mrs Temperton.

#### **4. NEXT STEPS**

- 4.1 It is intended to brief this Panel on progress towards transfer at each of the Panels' meetings.

#### Contact for further information

Glyn Jones, Adult Social Care, Health and Housing - 01344 351458  
[glyn.jones@bracknell-forest.gov.uk](mailto:glyn.jones@bracknell-forest.gov.uk)

Pat Riordan, Director of Public Health, NHS Berkshire East - 01753 636839  
[pat.riordan@berkshire.nhs.uk](mailto:pat.riordan@berkshire.nhs.uk)